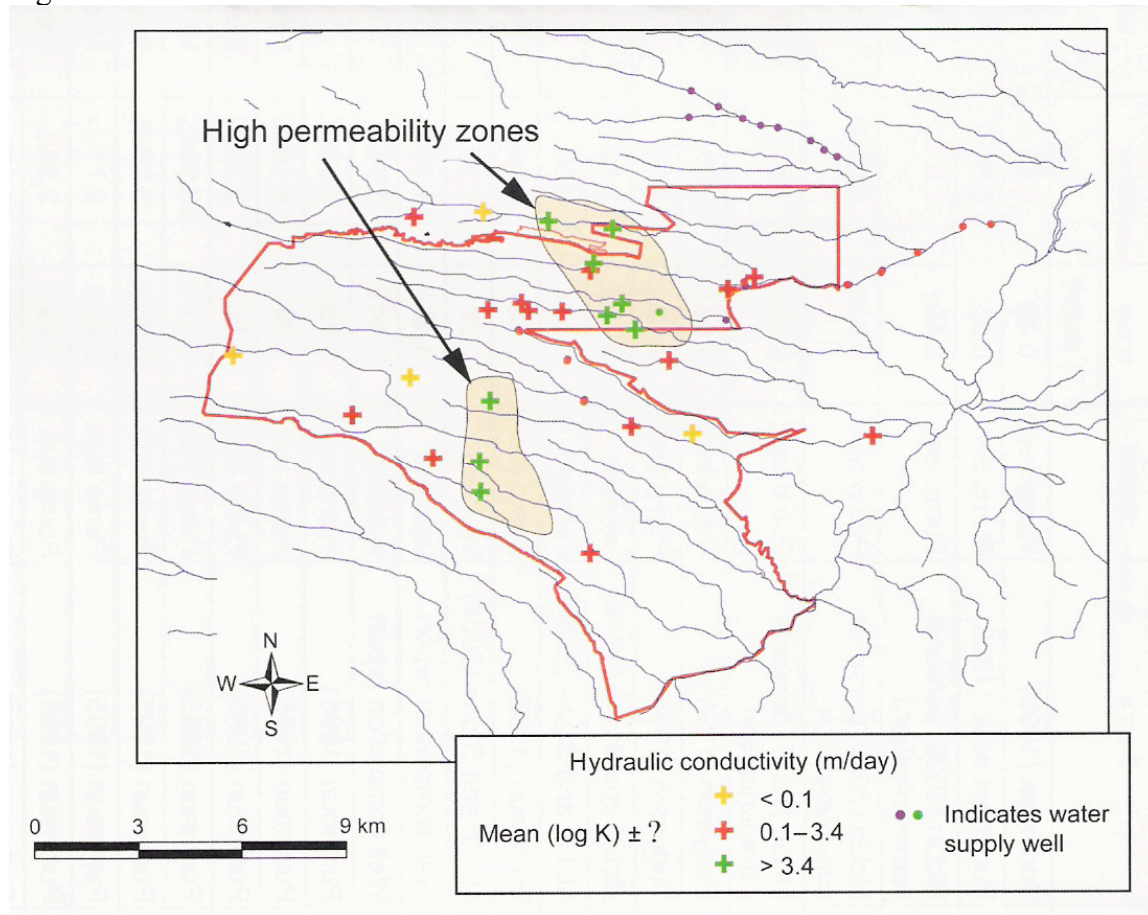


Figure 1-5



The above figure is figure 2-26 from the LANL *Synthesis Report* (LANL Report LA-14263-MS, December 2005)

Figure 1-5. The misrepresentation in the LANL *Synthesis Report* that the regional aquifer beneath the San Ildefonso Pueblo does not have high permeability. In fact, the LANL data show that the regional aquifer across the property of the Pueblo has very high permeability - possibly greater than 40 meters per day for much of the Pueblo. The regional aquifer of the San Ildefonso Pueblo is a valuable groundwater resource that must be protected from LANL waste. The high permeability of the regional aquifer increases the danger of widespread contamination of the groundwater of the San Ildefonso Pueblo from LANL waste.