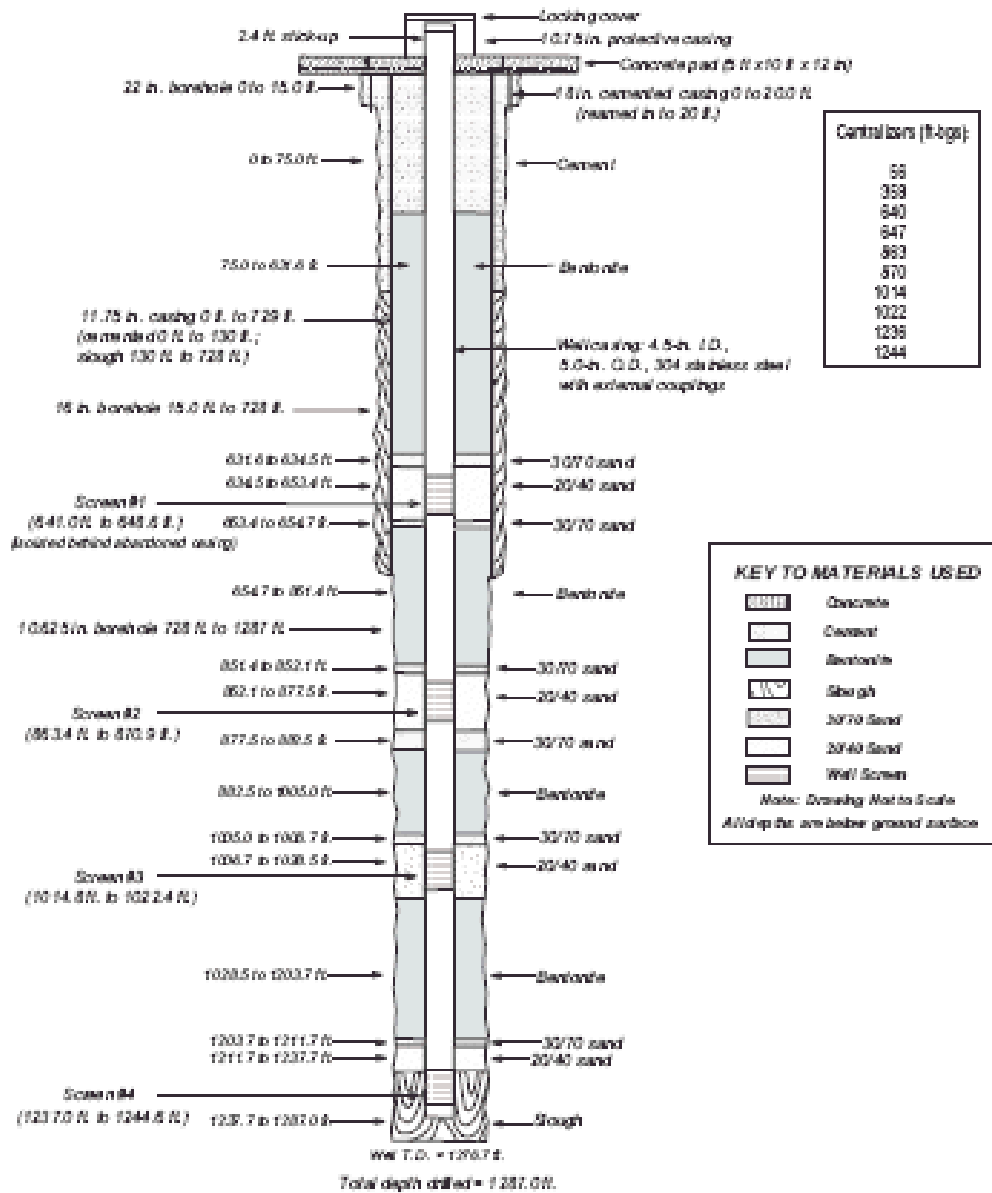


Figure 1-7.

As-built construction of LANL characterization well R-16, a sentry well for LANL contaminants traveling to the Rio Grande and to the Buckman well field. Screen #1 is blocked off by retractable drill casing that was abandoned in the borehole. Screen #4 does not produce representative groundwater samples because the screen is surrounded by bentonite clay slough sediments that were not cleaned from the borehole



Source: LANL Well R-16 Completion Report, LA-UR-03-1841